

Beeches

Beeches is a thirteen-bed home for adults with physical and learning disabilities located on our Mirfield site. This attractive, wooden-clad bungalow is one of three homes that make up the Meadows development.

Alongside the thirteen en-suite bedrooms, Beeches enjoy a shared patio area to enable them to take in the stunning views of the surrounding countryside.

In the outside garden area there are lots of opportunities to grow fruit and vegetables as well as space for the Beeches annual sunflower competition!

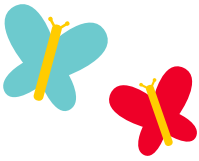
Our goal is to ensure the adults live as independently as possible and have access to community activities.

Our committed and passionate staff are highly trained to ensure they deliver the highest quality of person-centred and safe care.

“The Beeches is an Oasis of calm with beautiful gardens. The staff are amazing.”



TO DISCUSS REQUIREMENTS OR ORGANISE A VISIT, CONTACT US
admin@hollybanktrust.com



A little bit about us

We provide teaching, residential care, plus a range of therapies and enrichment activities for children, young people and adults with profound and multiple disabilities.

Everyone deserves to have a home where they feel safe and supported. Over the past seventy years, we have built our reputation as the experts in residential care for children, young people and adults with profound disabilities.

We have purpose-built residential accommodation for children, young people and adults, across ten residential homes. Our main site, at Roe Head in Mirfield, is set in 22 acres of beautiful, well-cared for grounds with views across to the Pennines.

Beyond our main site in Mirfield, we also have three community homes for adults in West and South Yorkshire.



The vast majority of people we support use wheelchairs to move around and communicate non-verbally. Our services are wheelchair accessible, although vary in layout.

The majority of our services have outdoor space to explore and enjoy the seasons to promote positive wellbeing.

Each service is unique, we provide support that is individual to each person, and promote full participation in our residential environments such as involving adults in decoration, furnishing, and we also promote utilising communal areas to meet preferred collective benefits.