

Orchard Court

Orchard Court is our children's residential home in Mirfield. It boasts seven accessible, en-suite rooms, all of which are wheelchair adapted and fitted with tracking hoists. It's a happy home and there's always lots going on – you'll usually find cake, too.

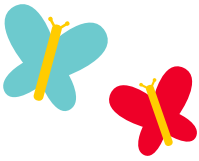
We offer full-time residential care, as well as short breaks and emergency placements, where possible. We're overseen by Ofsted and are registered for children and young people, aged 0-18 years.

All our children have complex physical disabilities and associated communication, sensory and learning difficulties and our dedicated staff team is specially trained to support a range of complex medical conditions.

“Orchard Court is a vibrant, homely environment and has a great team of care staff. There's always lots of laughter!”

TO DISCUSS REQUIREMENTS OR ORGANISE A VISIT, CONTACT US
admin@hollybanktrust.com





A little bit about us

We provide teaching, residential care, plus a range of therapies and enrichment activities for children, young people and adults with profound and multiple disabilities.

Everyone deserves to have a home where they feel safe and supported. Over the past seventy years, we have built our reputation as the experts in residential care for children, young people and adults with profound disabilities.

We have purpose-built residential accommodation for children, young people and adults, across ten residential homes. Our main site, at Roe Head in Mirfield, is set in 22 acres of beautiful, well-cared for grounds with views across to the Pennines.

Beyond our main site in Mirfield, we also have three community homes for adults in West and South Yorkshire.



The vast majority of people we support use wheelchairs to move around and communicate non-verbally. Our services are wheelchair accessible, although vary in layout.

The majority of our services have outdoor space to explore and enjoy the seasons to promote positive wellbeing.

Each service is unique, we provide support that is individual to each person, and promote full participation in our residential environments such as involving adults in decoration, furnishing, and we also promote utilising communal areas to meet preferred collective benefits.